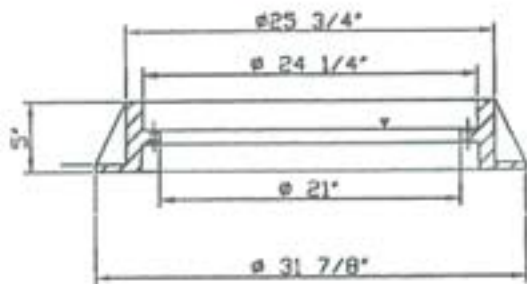
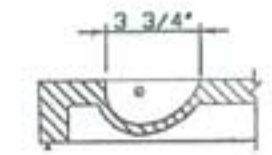


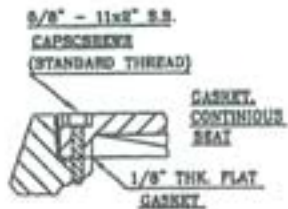
RING TOP VIEW



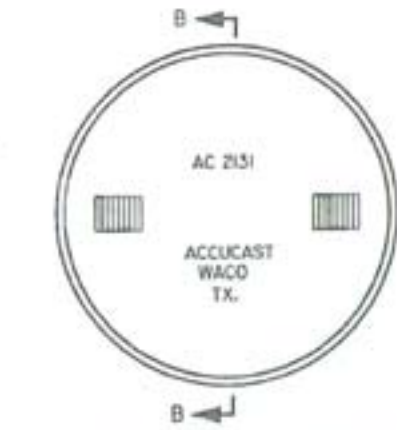
SECTION 'AA'  
RING



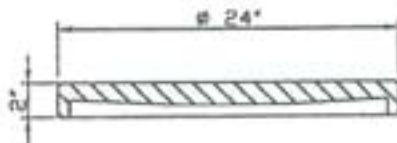
(2) TYPE 4A STEEL PICKBARS  
PICKBAR DETAIL



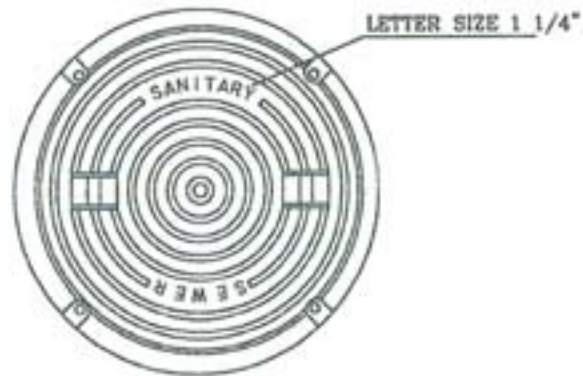
WATERTIGHT DETAIL



BOTTOM VIEW OF COVER



SECTION 'AA'  
COVER



TOP VIEW OF COVER

**AccuCast**

415 S. 21st. STREET  
WACO, TX 76706

Phone 1-254-756-3200  
Fax 1-254-756-0200  
Watts 1-800-433-6885

DRAWN BY: DATE:

APPROVED:

REVISION:

SCALE: NOT TO SCALE

LOAD RATING  
HEAVY DUTY

MATERIAL SPECIFICATION  
ASTM A 48 CLASS 30  
(Class 25 Available)

COATING  
BITUMINOUS TAR COATED  
(UNCOATED ON REQUEST)

ESTIMATED WEIGHT - LBS.

260 LBS

PART / DWG NUMBER

AC-2131

CATALOG NUMBER

220021

300-24 WATER TIGHT RING AND COVER